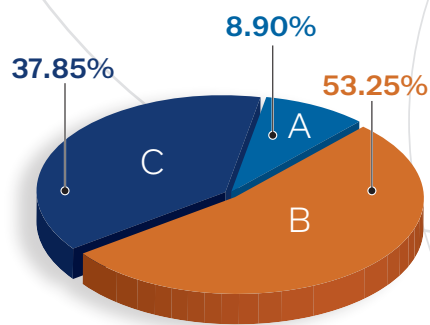


# Monitoring Live Activities of Daily Living (ADLs) Helps Nursing Facilities Receive Appropriate Reimbursement

A Mid-Atlantic LTPAC operator piloted Real Time’s software to evaluate the success of the live ADL module. Live ADL monitoring enables successful nursing facility operators to improve their reimbursement by ensuring that all clinical care they are providing is properly documented and submitted. Using the previous 12 months of RUG-IV ADL distribution as a baseline, this multisite organization saw significant increase in reimbursement 90 days after implementing Real Time.

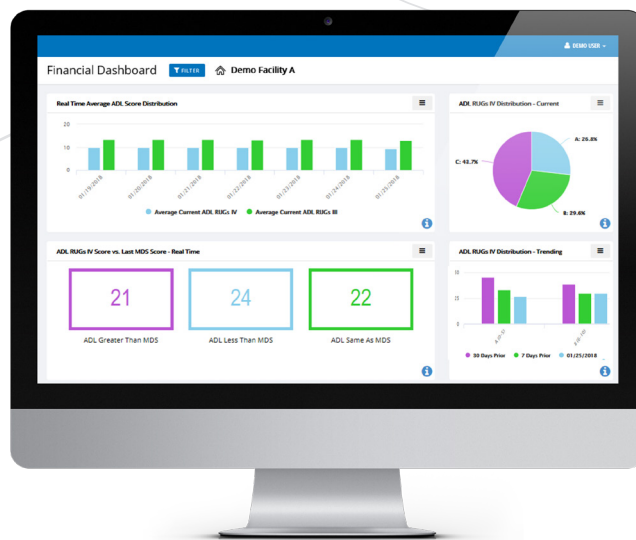
## Pre-Real Time Medicare A Distribution



August 2016 to July 2017  
Average Medicare Monthly Census 972 Days  
Average Medicare Rate \$658.06

## 90 Day Pilot Period

Real Time’s technology is a simple application that sits on top of a nursing home’s EMR. Installation is easy and requires no integration with the facility’s IT systems. The operator and Real Time established an implementation plan and in less than 60 days, all 21 locations were implemented and live. The Live ADL monitoring dashboard enables a nursing home manager to see their RUG-IV ADL distribution in real time. The manager can then “click” on the A, B and C components to review specific patients and staff’s documentation for that patient, thus enabling a manager to have complete oversight of all patients and their level of care at any time, from anywhere, on one report.



*Real Time’s Financial Dashboard provides live insight to better align care and reimbursement. All dashboards are interactive, with the ability to “view” patient specific details and nurse documentation.*

## Real Time Utilization Monitoring

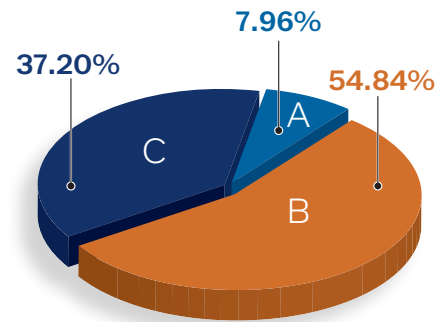
Where low/no user utilization occurred, Real Time Clinical Specialists retrained staff and informed managers. Average utilization moved from 1 minute per day in the first 30 days, to 7 minutes per day at the end of 90 days. Because Real Time extracts clinical data from a facility’s EMR, Real Time identifies problems in the clinical staff’s patient documentation. During this pilot period, Real Time Clinical Specialists worked closely with staff and managers to improve their EMR documentation and improve clinical care best practices through on demand webinars and conference calls.

# RESULTS

## At the End of 90 Days, this Operator's Consolidated RUG-IV ADL Scores had Changed.

For the first time ever, nursing home managers were able to monitor ADL scores live, enabling them to ask questions, provide staff training and ensure residents were properly coded for reimbursement. With just minutes per day, this operator moved their RUG-IV ADL distribution so that their reimbursement better aligned with all the great patient care they provide.

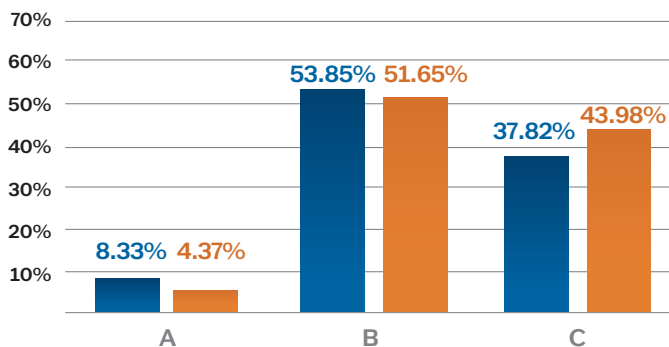
### Post-Real Time Medicare A Distribution



August 2017 to October 2017  
Average Medicare Monthly Census 972 Days  
Average Medicare Rate \$668.49

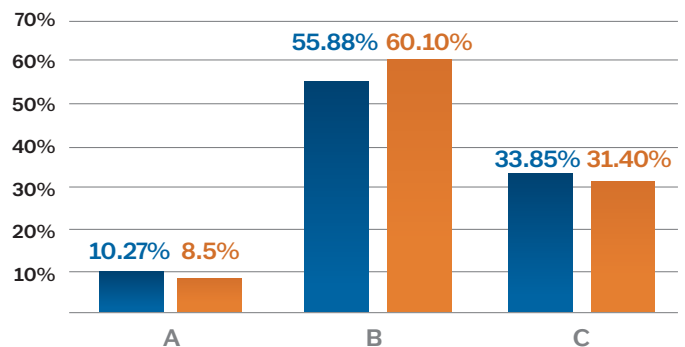
### Early Adopters RUG-IV ADL Shift

Medicare PPD increase \$14.72



### Mid Adopters RUG-IV ADL Shift

Medicare PPD increase \$2.11



NOTE: In the above charts, BLUE designates prior to Real Time, ORANGE designates with Real Time. An assessment of the pre and post Real Time RUG-IV ADL shift suggests the following positive results for this operator.

Average Medicare Increase in Rate	\$10.43 PPPD
Average Medicare Days/Building	972
Average Monthly Facility Increase	\$10,137.96
Number of Facilities Live on Real Time	21
Average Monthly Revenue (21 Homes)	\$212,897.16
Annualized (21 homes)	\$2.55M

### Lessons Learned and Next Steps for this Operator:

In a short amount of time, the improvement to reimbursement was significant. In addition to improved revenue, the operators were able to employ best practices relative to their CNA documentation of ADLs to ensure all staff are coding consistently and accurately. The measure of impact to clinical outcomes is still underway, but early results look positive. After the initial pilot phase, the operators decided to roll Real Time out to more of their facilities. Real Time has retrofitted this technology to provide the same revenue optimization functionality for the upcoming Medicare Part A RCS-I payment system.

For more information on Real Time or to start your pilot, please contact PJ Pry at [pj@realtimemed.com](mailto:pj@realtimemed.com)

Visit [www.RealTimeMed.com](http://www.RealTimeMed.com).

